

Notices to Mariners, SWEDEN Swedish Maritime Administration



Areas in Swedish Notices to Mariners



SWEDISH MARITIME
ADMINISTRATION

NtM-Editorial office
Swedish Maritime Administration
601 78 Norrköping

Sweden
Tel: 0771 630 605
E-mail: ufs@sjofartsverket.se

Publisher:
Hydrographer Patrik Wiberg

The Swedish Notices to Mariners (Ufs) booklet is an official Swedish publication regularly published on a weekly basis.

Each PDF-file consists of a number of notices also accessible on www.sjofartsverket.se/ntm

Each booklet contains information on changes made to official Swedish nautical charts, as well as essential information on occurrences that pertain to safe navigation in Swedish waters.

Information available on foreign waters is limited. Ufs is not suitable for the task of keeping BA-charts and other nautical charts updated.

Note: Unintentional page breaks may occur as the PDF-file is generated automatically.

Announcements – General information, e.g. new chart editions, statutes/decrees from national authorities

Notices – Chart corrections and temporary/preliminary notices for a given geographical location

An asterisk (*) in front of the notice number denotes that the notice is based on source material obtained from a Swedish national source and that the details stated therein affect Swedish waters.

When a notice number is followed by a '(P)' this signifies that the information contained therein is of a preliminary nature. An upcoming notice containing a chart correction will replace the former.

Similarly, when the letter '(T)' is used this indicates that the notice is of a temporary nature.

In case no period of validity is stated, such a notice will be invalidated either when a new temporary notice or a chart correction replaces it.

Information in temporary and preliminary notices are generally available as an update to ENC. In case ENC updates are not available, the notice will state 'Not shown in ENC'.

Bearings are true and given clockwise from 000° to 360° and, when describing a light house beam, indicate a direction from seaward towards shore.

Note: Chartlets are intended to simplify chart correction work and are not always true to scale. Generally, these pictorials show the largest charted scale available for respective area.

The respective informant is responsible for factual content.

Please refer to more information on the use of Ufs in the official Swedish publication **Ufs A**.

Reporting dangers and errors

All observations concerning floating aids to navigation, unlit beacons and lights, objects adrift or any other occurrence that may have a detrimental impact on the safety at sea are to be reported to Sweden Traffic at the earliest possible opportunity.

Call: Sweden Traffic

Channel: Appropriate working channel

Phone: +46 771 630 685 (24/7)

E-mail: swedentraffic@sjofartsverket.se

Affected charts and Notices

Affected charts	Notice no	Affected charts	Notice no
111	17211	6145	17321
111	17257	9313	17233
111	17283 (T)		
113	17200		
113	17211		
113	17213		
113	17253		
113	17255		
113	17257		
113	17258		
113	17260		
113	17261		
514	17262		
523	17263		
523	17313		
524	17313		
612	17321		
931	17233		
1131	17293		
1133	17200		
1133	17211		
1133	17213		
1133	17253		
1133	17255		
1133	17257		
1133	17261		
6141	17304		
6141	17320		
6142	17304		
6142	17320		
6142	17321		
6143	17321		

ANNOUNCEMENTS

*** 17277**

Chart: 6141, 6181

Sweden. not area bound. New print of charts. New edition of chart 6141 and 6181.

A new edition of the following nautical charts are available from December 2022:

Chart Edition

6141	12.0 NEW EDITION
6181	12.0 NEW EDITION

A NEW EDITION is a print of an existing chart, containing changes significant to navigation which are not possible to fully describe in the Swedish NtM.

<https://ufs.sjofartsverket.se/en/Current/Products>

Sjöfartsverket, Norrköping. Publ. 21 Dec 2022

*** 17310 (T)**

Chart: 6241

Sweden. Central Baltic. Oskarshamn. Maximum draft.

Expired notices: [2020:830/15384\(T\)](#)

Time: Until further notice.

Maximum draft for vessels calling Oskarshamn inner port is 6.6 m.

Oskarshamn	57-15,85N	016-27,83E
------------	-----------	------------

Not shown in ENC.

Bsp Kalmarsund 2019/s41, s42, S43

Sjöfartsverket. Publ. 21 Dec 2022

*** 17316 (T)**

Chart: 742

Sweden. Southern Baltic. Sölvesborg. Reduced maximal draught.

Time: Until further notice.

Maximum draft for vessels calling Sölvesborg Hamn, berth no. 57 and no. 58 is 6,0 m.

Sölvesborg, berth no. 57 and no. 58	56-01,846N	014-34,595E
-------------------------------------	------------	-------------

Not shown in ENC.

Bsp Hanöbukten 2022/s25, s52

Sjöfartsverket. Publ. 21 Dec 2022

NOTICES

Areas without notices in this booklet

Bay of Bothnia
The Quark
Sea of Åland and Archipelago Sea
Gulf of Finland
Gulf of Riga
Central Baltic
South-Eastern Baltic
Southern Baltic
South-Western Baltic
The Sound
The Belts
Skagerrak
Lake Vänern and Trollhätte Canal
Inshore waters
not area bound

Sea of Bothnia

*** 17262**

Chart: 514

Sweden. Sea of Bothnia. Husum. Tritongrundet. Buoyage.

Amend	port-hand spar buoy with top mark to port-hand light spar buoy FIR 3s	a)	63-18,256N	019-08,682E
Amend	starboard-hand spar buoy to starboard-hand light spar buoy FIG 3s	b)	63-18,438N	019-09,321E

Bsp Bottenhavet N 2019/s22, s53

Sjöfartsverket. Publ. 21 Dec 2022

*** 17263**

Chart: 523

Sweden. Sea of Bothnia. N of Härmösand. Sannasundet. Buoyage.

Amend	starboard-hand spar buoy to starboard-hand light spar buoy FIG 3s	62-42,06N	017-59,67E
--------------	---	-----------	------------

Bsp Bottenhavet N 2019/s12

Sjöfartsverket. Publ. 21 Dec 2022

* 17313

Chart: 523, 524

Sweden. Sea of Bothnia. Härnön. Solumnshamn. Rock awash.

Delete	rock awash	62-34,14N	017-57,08E
--------	------------	-----------	------------

Bsp Bottenhavet N 2019/s11

Sjöfartsverket. Publ. 21 Dec 2022

Northern Baltic

* 17304

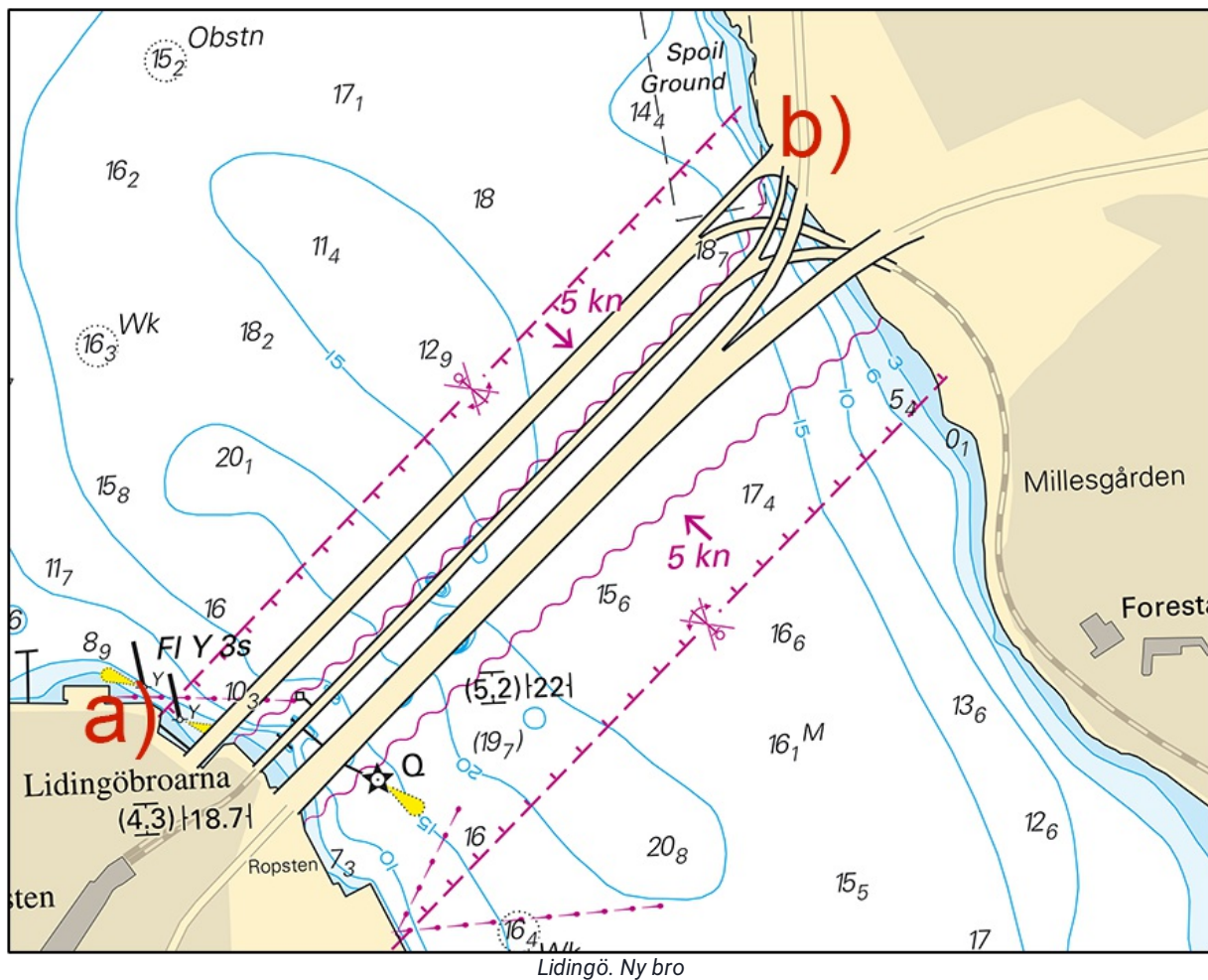
Chart: 6141, 6142

Sweden. Northern Baltic. Stockholm. Lidingö. New bridge.

Expired notices: 2020:826/15300(T)

Insert	fixed bridge between positions a) and b)	a)	59-21,53N	018-06,28E
		b)	59-21,82N	018-06,87E

BSP Stockholm M 2022/s09, s10, s12



Implenia Sverige AB. Publ. 21 Dec 2022

*** 17320****Chart: 6141, 6142****Sweden. Northern Baltic. Stockholm. Saltsjön. Djurgården. Biskopsudde. Manillaskolan.
Buoyage withdrawn.**

Delete	starboard-hand spar buoy	a)	59-19,329N	018-07,672E
Delete	starboard-hand spar buoy	b)	59-19,330N	018-07,753E

BSP Stockholm M 2022/s07, s10

*Stockholms Hamn AB. Publ. 21 Dec 2022**** 17321****Chart: 612, 6142, 6143, 6145****Sweden. Northern Baltic. Stockholm archipelago. Removal of cable. Works completed.**Expired notices: [2022:938/17239\(T\)](#)

Cable removing operation has been completed.

BSP Stockholm M 2022/s11, s12, s13, s14, s15, s21, s23, s29, s46, Bsp Stockholm N 2022/s38, s42, s43

*Baltic Offshore. Publ. 21 Dec 2022***Lake Mälaren and Södertälje Canal**

* 17200

Chart: 113, 1133

Sweden. Lake Mälaren and Södertälje Canal. Lake Mälaren. SW of bridge 'Hjulstabron'. Light 'Märsön'. Sectors. Character.

Change of character and sectors at light 'Märsön'.

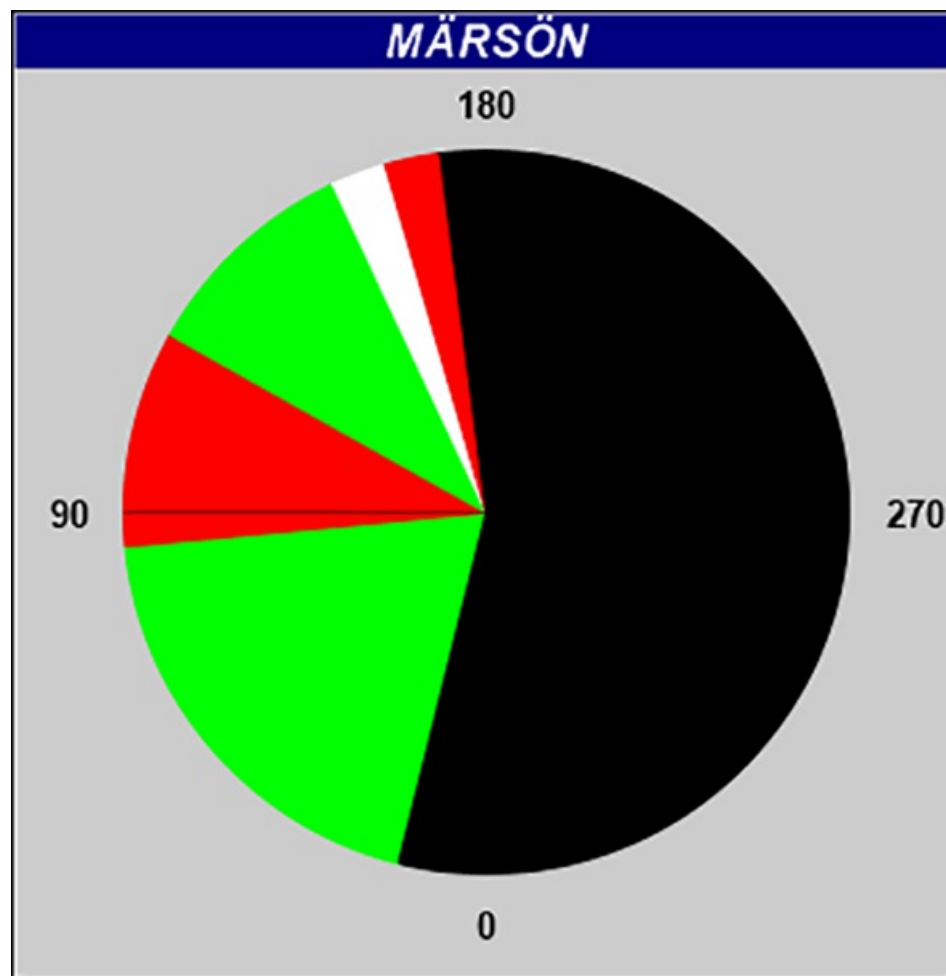
Amend	character for light 'Märsön' to Iso WRG 3s	59-31,201N	016-59,350E
--------------	--	------------	-------------

Sector Bearing

G	014,0° - 084,6°
R	084,6° - 119,4°
G	119,4° - 155,0°
W	155,0° - 163,8°
R	163,8° - 172,7°
Dk	172,7° - 014,0°

Adm. LoL C6686-6

Bsp Mälaren - Hjälaren 2020/s23, s62



Sectors. Light 'Märsön'

* 17211

Chart: 111, 113, 1133

Sweden. Lake Mälaren and Södertälje Canal. S of Enköping. N of Koholmen. Light Nybyholm.
Character. Sectors.

Change of character and sectors at light 'Nybyholm'.

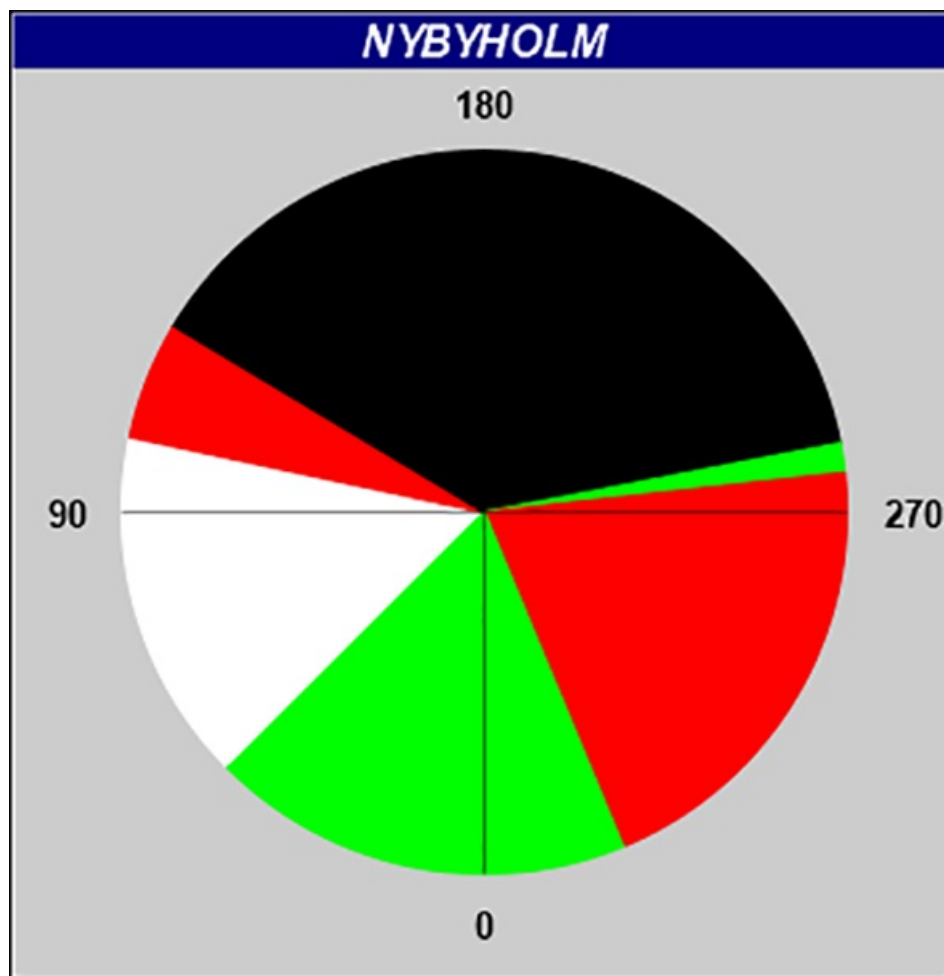
Amend	character for light 'Nybyholm' to Iso WRG 3s	59-31,682N	017-01,952E
--------------	--	------------	-------------

Sector Bearing

G	259,0° - 263,7°
R	263,7° - 337,5°
G	337,5° - 045,0°
W	045,0° - 102,0°
R	102,0° - 121,0°
Dk	121,0° - 259,0°

Adm. LoL C6685-6

Bsp Mälaren - Hjälmarén 2020/s23, s63



Sectors. Light 'Nybyholm'

* 17213

Chart: 113, 1133

Sweden. Lake Mälaren and Södertälje Canal. Lake Mälaren. Hjulstafjärden. Light Strömskär.
Character. Sectors.

Change of character and sectors at light 'Strömskär'.

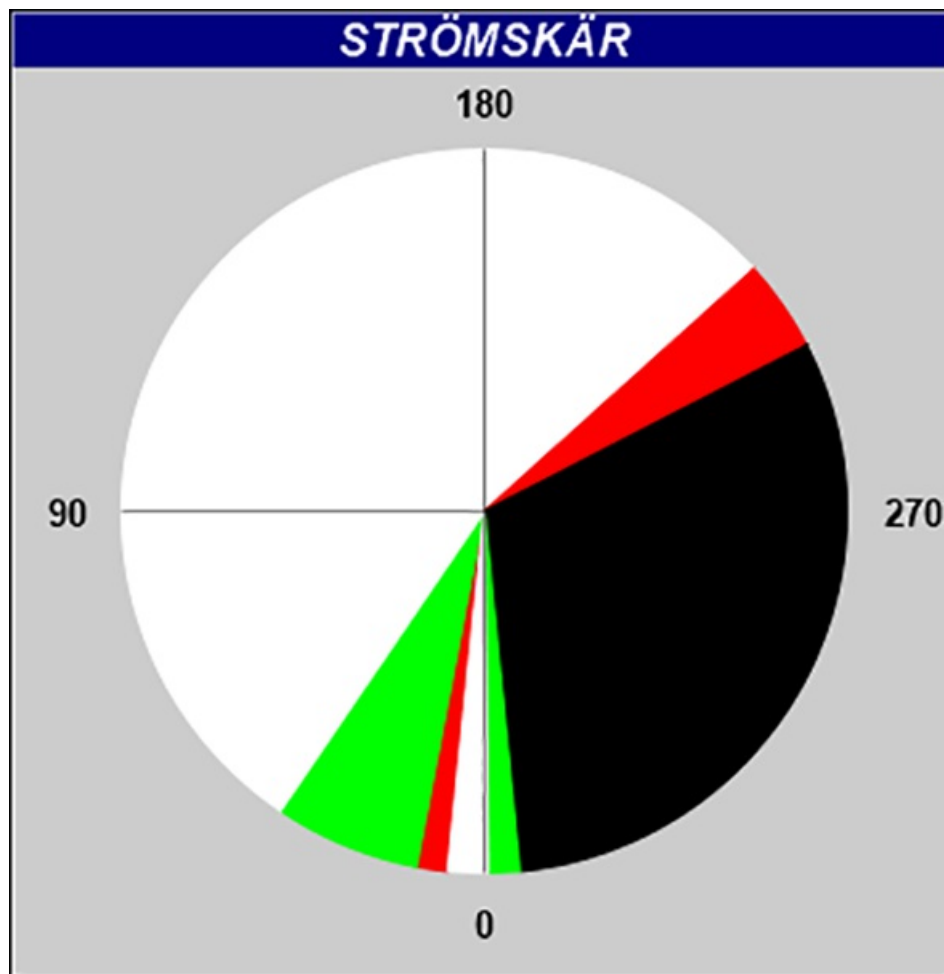
Amend	character for light 'Strömskär' to Iso WRG 3s	59-31,732N	016-59,242E
--------------	---	------------	-------------

Sector Bearing

G	354,4° - 359,4°
W	359,4° - 005,8°
R	005,8° - 010,8°
G	010,8° - 034,2°
W	034,2° - 228,0°
R	228,0° - 242,7°
Dk	242,7° - 354,4°

Adm. LoL C6686-4

Bsp Mälaren - Hjälmarén 2020/s23, s62



Sectors. Light 'Strömskär'

*** 17253****Chart: 113, 1133****Sweden. Lake Mälaren and Södertälje Canal. SE of Västerås. Granfjärden. Light 'Lilla Aggarö'. Sectors. Character.**

Change of character and sectors at light 'Lilla Aggarö'.

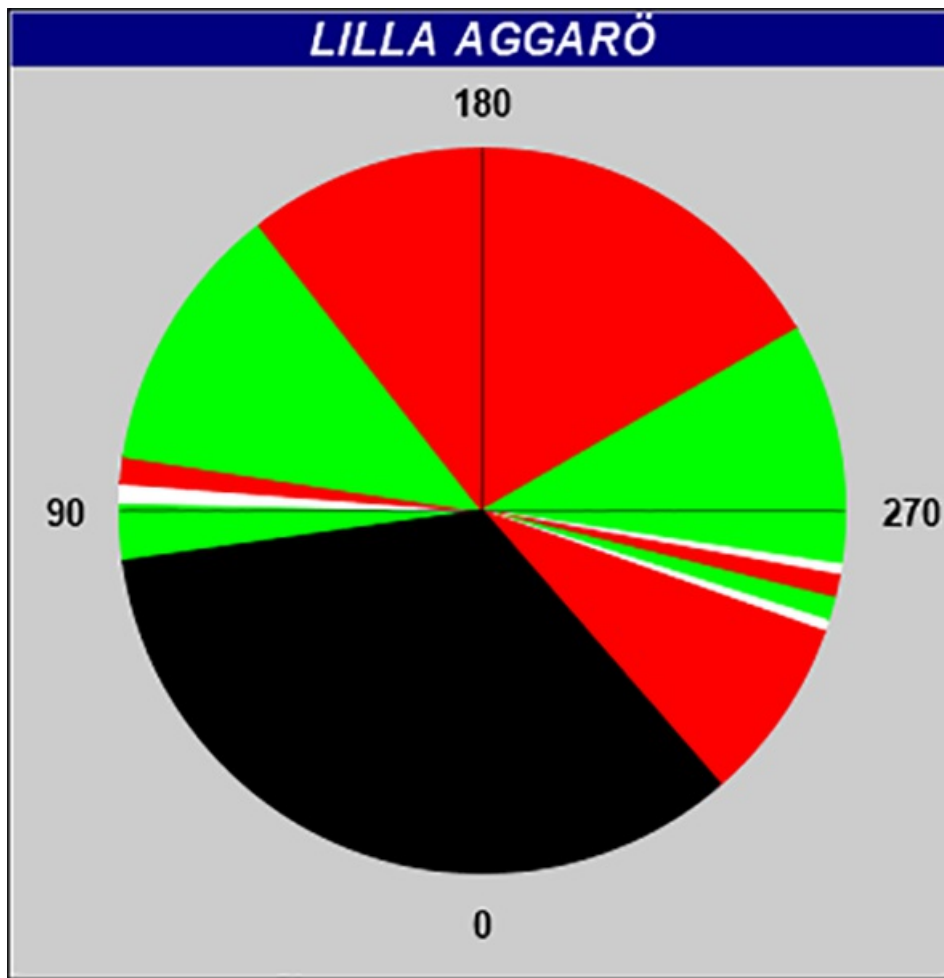
Amend	character for light 'Lilla Aggarö' to Iso WRG 3s	59-30,849N	016-43,877E
--------------	--	------------	-------------

Sector Bearing

G	082,0° - 091,4°
W	091,4° - 094,4°
R	094,4° - 098,7°
G	098,7° - 142,0°
R	142,0° - 240,0°
G	240,0° - 278,6°
W	278,6° - 280,3°
R	280,3° - 284,0°
G	284,0° - 287,7°
W	287,7° - 289,5°
R	289,5° - 319,0°
Dk	319,0° - 082,0°

Adm. LoL C6688-6

Bsp Mälaren - Hjälmarén 2020/s21, s22, s61



Sectors. Light 'Lilla Aggarö'

Sjöfartsverket. Publ. 21 Dec 2022

* 17255

Chart: 113, 1133

Sweden. Lake Mälaren and Södertälje Canal. Lake Mälaren. SE of Västerås. Ridöfjärden. Light 'Fröholmen'. Sectors. Character.

Change of character and sectors at light 'Fröholmen'.

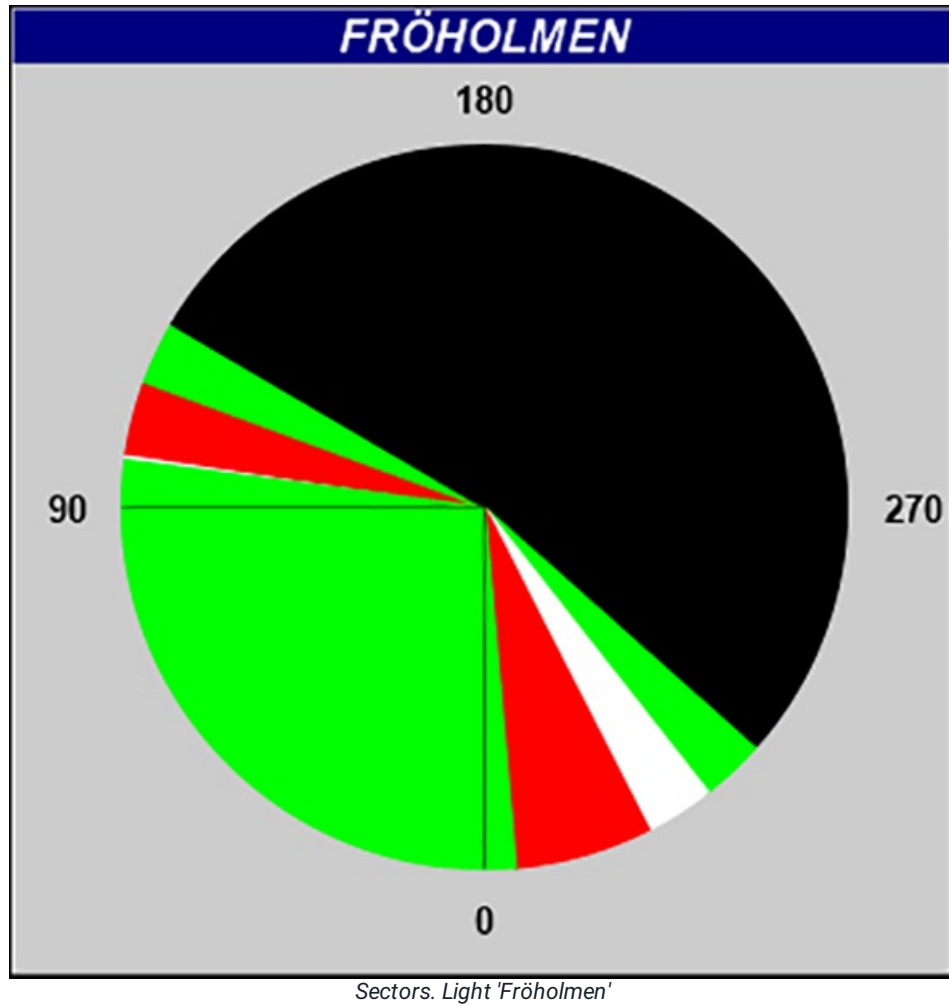
Amend	character for light 'Fröholmen' to Iso WRG 3s	59-31,700N	016-40,624E
--------------	---	------------	-------------

Sector Bearing

G	311,7° - 321,9°
W	321,9° - 333,0°
R	333,0° - 355,0°
G	355,0° - 097,5°
W	097,5° - 098,6°
R	098,6° - 110,3°
G	110,3° - 120,4°
Dk	120,4° - 311,7°

Adm. LoL C6689-2

Bsp Mälaren - Hjälaren 2020/s21, s61



Sjöfartsverket. Publ. 21 Dec 2022

*** 17257****Chart: 111, 113, 1133**

Sweden. Lake Mälaren and Södertälje Canal. Lake Mälaren. E of bridge 'Hjulstabron'. Light 'Koholmsgrund'. Sectors. Character.

Change of character and sectors at light 'Koholmsgrund'.

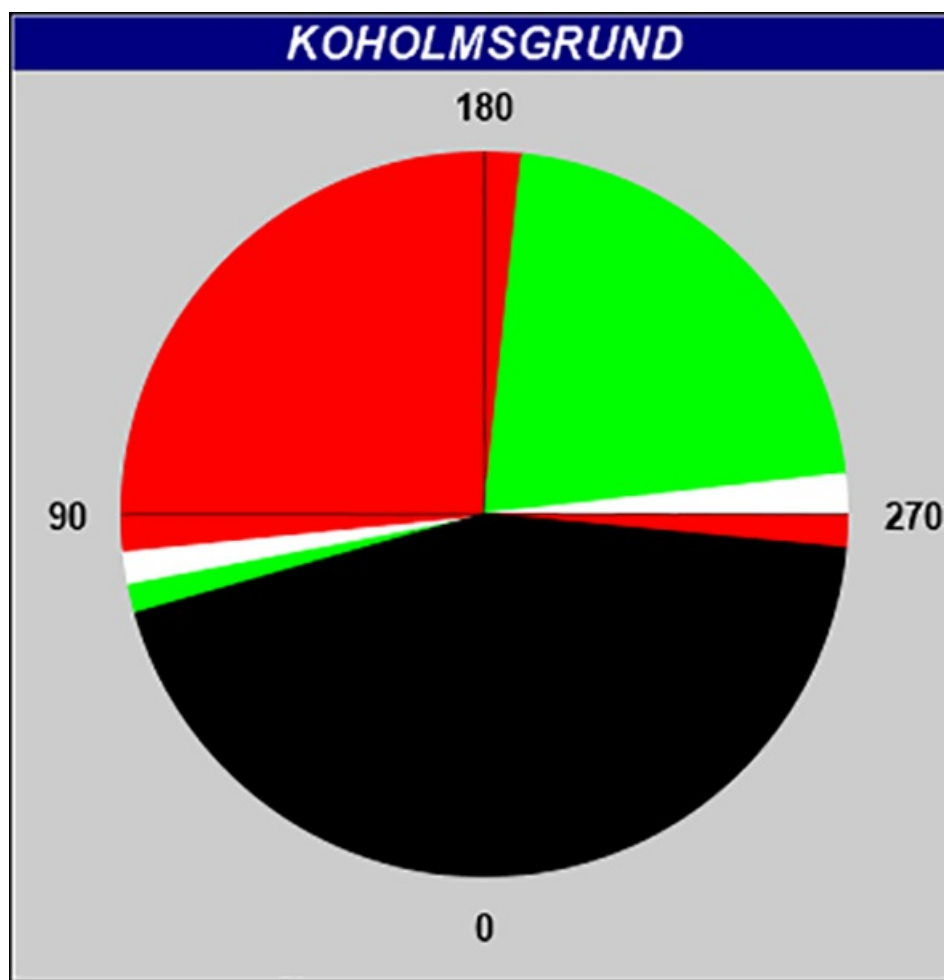
Amend	character for light 'Koholmsgrund' to Fl(2) WRG 3s	59-31,712N	017-03,000E
--------------	--	------------	-------------

Sector Bearing

G	074,1° - 079,1°
W	079,1° - 084,3°
R	084,3° - 186,0°
G	186,0° - 263,6°
W	263,6° - 270,2°
R	270,2° - 275,4°
Dk	275,4° - 074,1°

Adm. LoL C6685-4

Bsp Mälaren - Hjälmarén 2020/s23, s63



Sectors. Light 'Koholmsgrund'

* 17258

Chart: 113

Sweden. Lake Mälaren and Södertälje Canal. Lake Mälaren. S of Västerås. W of Ridön. Light 'Högholm'. Sectors. Character.

Change of character and sectors at light 'Högholm'.

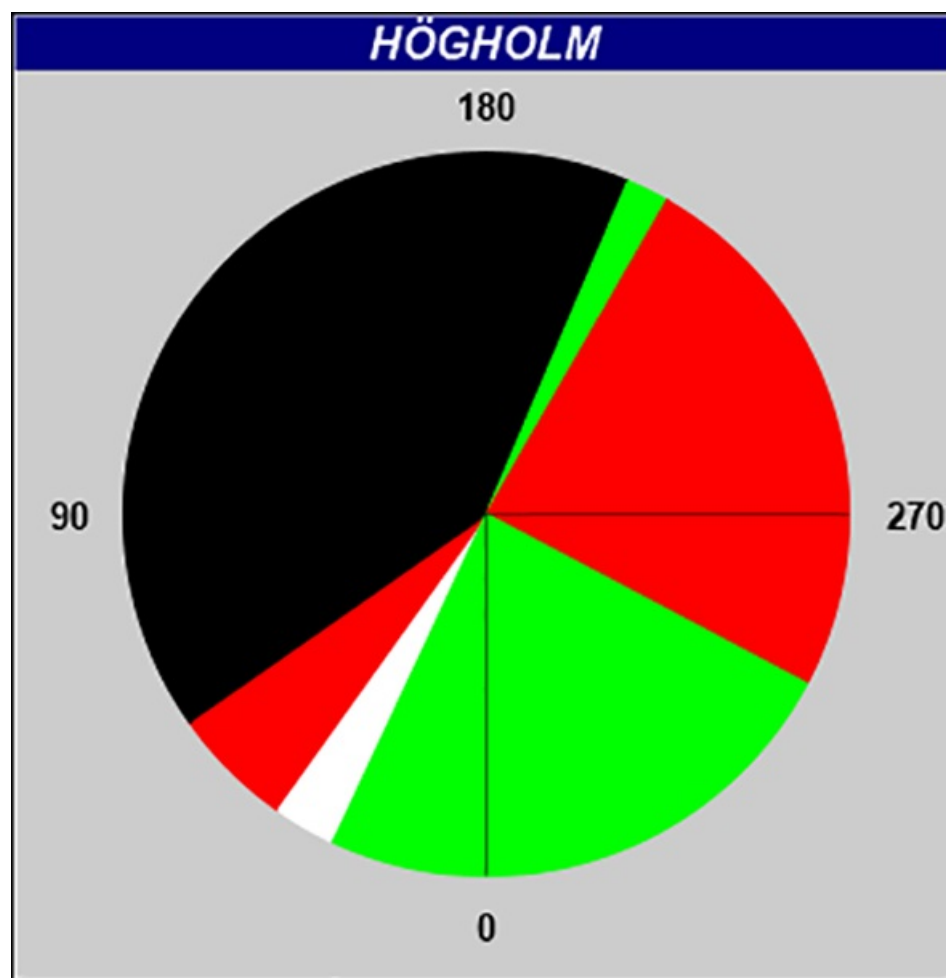
Amend	character for light 'Högholm' to Fl(2) WRG 3s	59-30,252N	016-34,697E
--------------	---	------------	-------------

Sector Bearing

G	203,0° - 209,9°
R	209,9° - 297,9°
G	297,9° - 025,0°
W	025,0° - 035,5°
R	035,5° - 055,5°
Dk	055,5° - 203,0°

Adm. LoL C6691-1

Bsp Mälaren - Hjälaren 2020/s20, s21, s56



Sectors. Light 'Högholm'

*** 17260**

Chart: 113

Sweden. Lake Mälaren and Södertälje Canal. Lake Mälaren. S of Ängsön. Hallingen. Light 'Hallingön'. Sectors. Character.

Change of character and sectors at light 'Hallingön'.

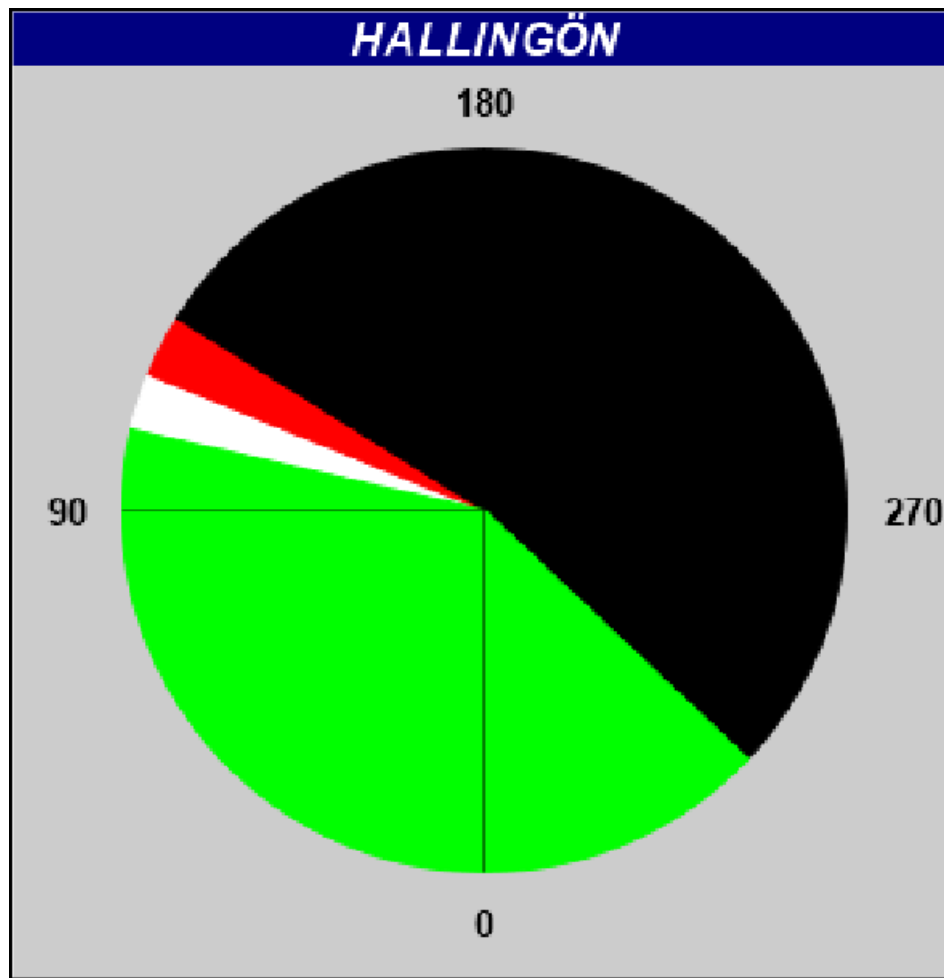
Amend	character for light 'Hallingön' to Iso WRG 3s	59-29,442N	016-51,927E
--------------	---	------------	-------------

Sector Bearing

G	313,4° - 102,9°
W	102,9° - 112,1°
R	112,1° - 122,1°
Dk	122,1° - 313,4°

Adm. LoL C6687-8

Bsp Mälaren - Hjälmarens 2020/s22



Sectors. Light 'Hallingön'

Sjöfartsverket. Publ. 21 Dec 2022

*** 17261**

Chart: 113, 1133

Sweden. Lake Mälaren and Södertälje Canal. Lake Mälaren. S of Västerås. Light 'Stora Aggarö'. Sectors. Character.

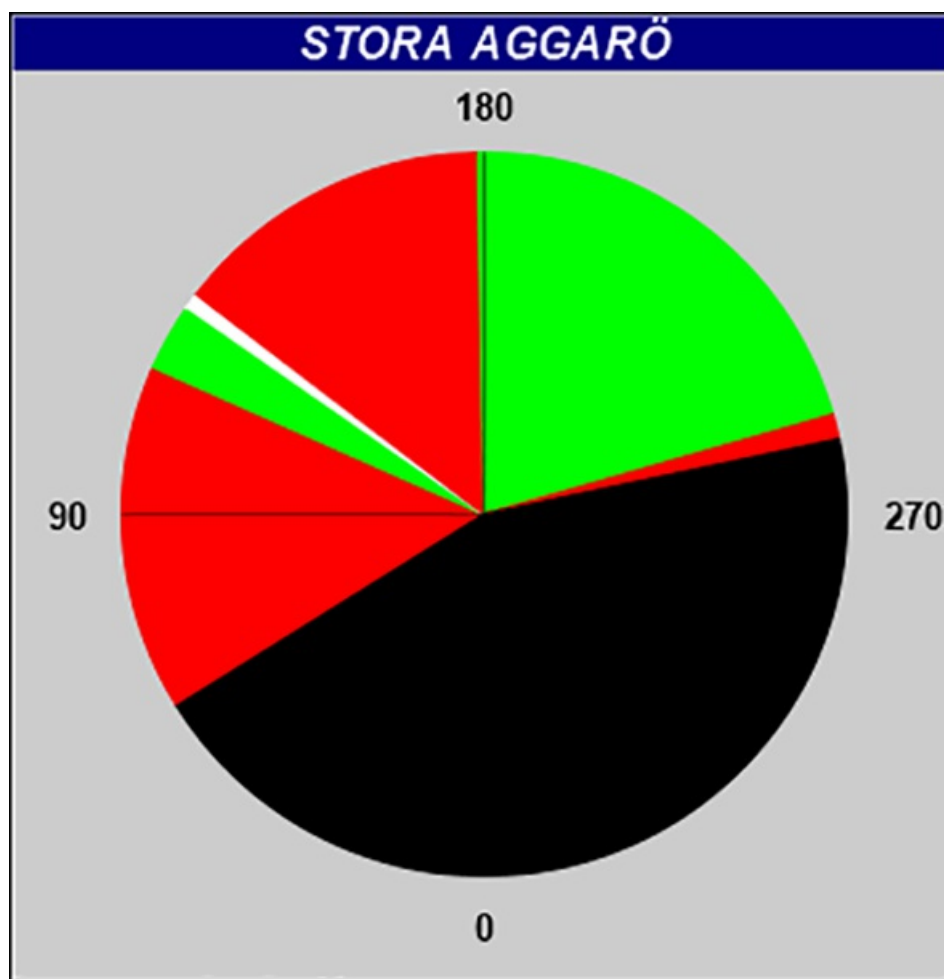
Change of character and sectors at light 'Stora Aggarö'.

Amend	character for light 'Stora Aggarö' to Iso WRG 3s	59-30,735N	016-42,337E
--------------	--	------------	-------------

Sector	Bearing
R	058,0° - 114,0°
G	114,0° - 124,9°
W	124,9° - 127,4°
R	127,4° - 179,0°
G	179,0° - 254,0°
R	254,0° - 258,0°
Dk	258,0° - 058,0°

Adm. LoL C6688-8

Bsp Mälaren - Hjälmarén 2020/s21, s61



Sectors. Light 'Stora Aggarö'

*** 17283 (T)****Chart: 111**

Sweden. Lake Mälaren and Södertälje Canal. NW of Stockholm. Järfälla. Stäket. Bridge under construction. Temporary limited horizontal clearance.

See: [2021:887/16424\(P\)](#)

Time period: January 1 - March 31, 2023

A new bridge across the fairway at Stäket is under construction south of the existing road bridge. Work is conducted from land and from rafts.

Horizontal clearance will be reduced to 6.5 meters during the stated period.

Bridge under construction by 'Stäket'	59-28,35N	017-47,50E
---------------------------------------	-----------	------------

Bsp Mälaren - Hjälmarén 2020/s47, s59

Peab. Publ. 21 Dec 2022

*** 17293****Chart: 1131**

Sweden. Lake Mälaren and Södertälje Canal. Lake Mälaren. SW of Köping. Light 'Östra torpet'. Sector.

The limit between the green and white sectors of Light 'Östra torpet' has been amended. Please note that the bearing is the direction from sea, towards the light.

	Light 'Östra torpet' Fl(2) WRG 6s	59-27,96N	016-11,56E
Amend	sector limit green - white from 305° to 306°		

Adm. LoL C6694-7

Bsp Mälaren - Hjälmarén 2020/s18

Sjöfartsverket. Publ. 21 Dec 2022

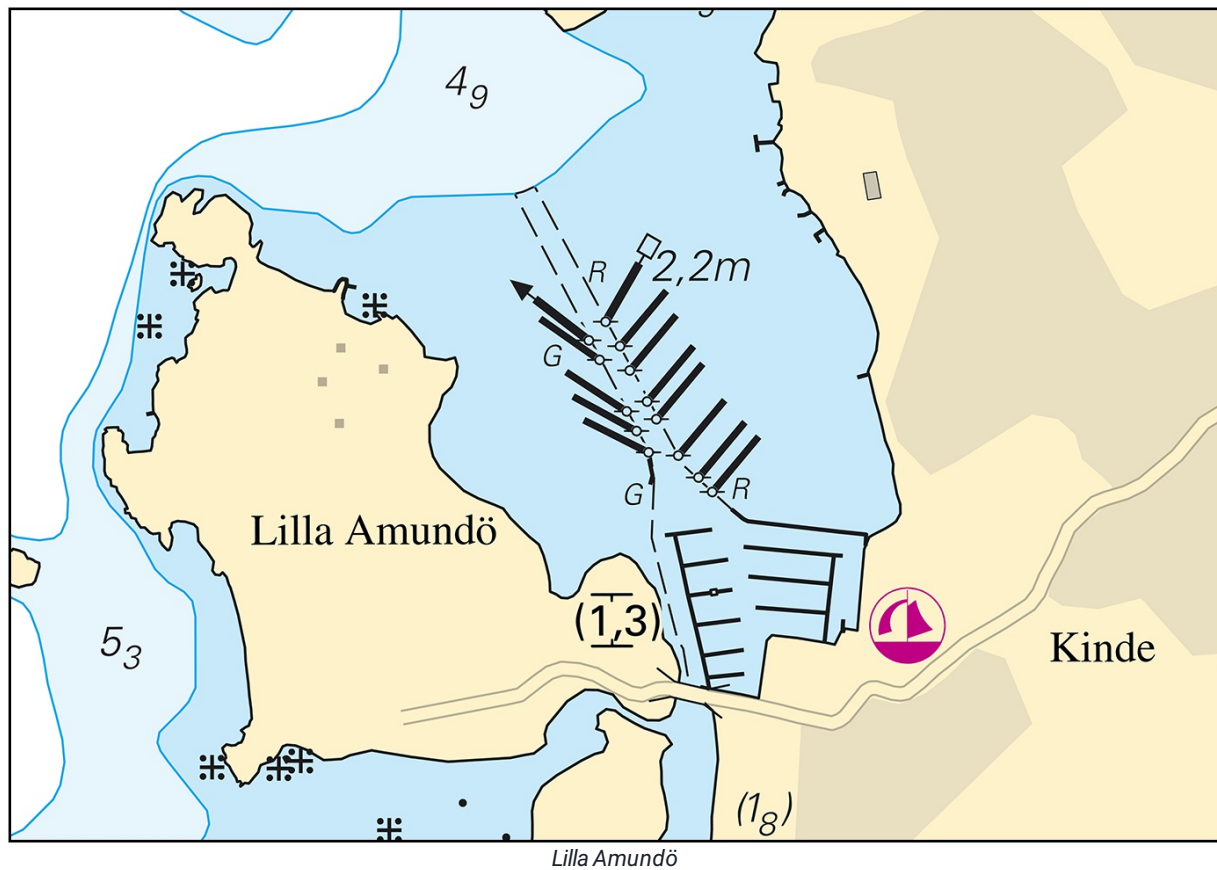
Kattegat*** 17233****Chart: 931, 9313**

Sweden. Kattegat. Askimsviken. Buoyage.

Buoyage in the fairway to the marina has been adjusted in the chart as per below.

Move	starboard-hand spar buoy	a)	57-36,065N	011-55,050E	with topmark
Move	starboard-hand spar buoy	b)	57-36,052N	011-55,063E	
Move	starboard-hand spar buoy	c)	57-36,019N	011-55,096E	
Move	starboard-hand spar buoy	d)	57-36,006N	011-55,108E	
Move	starboard-hand spar buoy	e)	57-35,992N	011-55,123E	
Move	port-hand spar buoy	f)	57-36,077N	011-55,071E	with topmark
Move	port-hand spar buoy	g)	57-36,062N	011-55,089E	
Move	port-hand spar buoy	h)	57-36,046N	011-55,100E	
Move	port-hand spar buoy	i)	57-36,025N	011-55,121E	
Move	port-hand spar buoy	j)	57-36,014N	011-55,132E	
Move	port-hand spar buoy	k)	57-35,990N	011-55,157E	
Move	port-hand spar buoy	l)	57-35,976N	011-55,182E	
Move	port-hand spar buoy	m)	57-35,967N	011-55,200E	

Bsp Västkusten S 2021/s19, s51



Sjöfartsverket. Publ. 21 Dec 2022